

2023-2024

Annual Report

to the Community



Our Vision

Our communities are free of family violence

Our Mission

To end the traumatic cycle of domestic violence for families with children

Our Values

Empowerment • Tenacity • Inclusion • Curiosity • Collaboration



Theory of Change

A family is experiencing domestic violence

OUR WORK

safe and affordable housing, counselling, parenting programs, case management

OUTCOMES

increased resiliency, improved parent-child attachment, increased protective factors for children, long-term life skills

THE IMPACT

the traumatic cycle of domestic violence is ended for that family

Our work is grounded in trauma-informed, client-centred approaches that are inclusive and culturally appropriate.

Why we exist

On average, a woman is killed by her partner every 6 days in Canada.

29% of women experience intimate partner violence in their lifetime.

The impact of trauma on a child's brain development, especially in the first five years, can have devastating and lifelong consequences. Children exposed to violence at a young age are even more likely to experience or use domestic violence later in life.

Family violence is a leading cause of homelessness for women and children.

Our Priorities

The following strategic priorities guide our efforts:

OPTIMIZE OUR IMPACT

BE THE BEST
PLACE TO WORK

BE ADAPTABLE

INCREASE COMMUNITY
LEADERSHIP AND
ENGAGEMENT

Our 2023-26 Strategic Plan can be viewed on our website at discoveryhouse.ca/our-work/strategicplan.



Message from the Chair & Executive Director

Oki, Âba wathtech, Danit'ada, Tawnshi, Tansi and Hello!

Discovery House has had a dynamic, fast paced and successful year! We were met with many escalating challenges – the housing crisis, growth of inflation, and high levels of gender-based violence, and yet our commitment to ending domestic violence was unwavering. This year we helped over 500 individuals who bravely left domestic violence seeking healing, hope, and a new life to build sustainable lives free of violence through our housing, counselling, and support services. Families like Diya's were amongst them. See their story on the next page.

We know that we need to do more. We continue to see domestic violence at some of the highest rates in Canada. The level of danger experienced by our families increased over the last year. The housing crisis in Calgary is having an enormous impact on families leaving domestic violence. It is critical that we invest our time and energy in policy and systems work that can impact the experience of future generations.

Driven by the evolving needs of our families, we focused on the housing crisis, leaning into housing from a policy, strategy, and government relations lens. To meet clients' needs – now and in the future – we have developed partnerships with housing providers, presented at City Council in support of the Housing Strategy, submitted budget feedback provincially and federally, and have worked with other domestic violence organizations in Calgary to advocate for more affordable housing and larger units that can accommodate the needs of families with several children.

We also supported the drafting of federal Bill C-332 (An Act to Amend the Criminal Code of Canada) and are delighted to see it pass third reading unanimously in the House of Commons in June. It now goes to Senate, where it will be



debated and studied before it can become law. If passed, this Bill will create important tools for law enforcement to intervene in damaging and dangerous patterns of abuse, called **coercive control**, even when physical violence is not present.

Despite the current challenges in our environment, our latest annual report is one of progress and hope – all possible because of people like you who are committed to helping our community become free of family violence. To those of you who fund, partner with, work for or volunteer at Discovery House, thank you!

As we move into the next year, there is much to look forward to. We are excited to continue to advocate for system changes to prevent domestic violence, invest in our people and programs, and, most importantly, help families to heal and have hope for their future.

Leslie Hill
Executive Director

Doris Hall
Chair of the
Board of Directors

COERCIVE CONTROL: a pattern of threats, humiliation, isolation and intimidation meant to harm, control or gain power in a relationship.

Diya's Story

Diya* came to live at Discovery House's shelter with her young son and daughter, having left their home, their beloved dog, and her partner for the very last time. At first, Diya and her children slept in the living room of a friend. The children were confused and sad, but they were safer there than at home. Diya and her friend made some phone calls, and she was able to access an emergency shelter because her partner had discovered where they were, and she knew it was only a matter of time before he'd come knocking at the door.

After the maximum three-week stay at the emergency shelter, they were referred to Discovery House. The Discovery House team helped set up their new bright, spacious, fully furnished two-bedroom apartment. Everything from bedding, towels, dishes, books and games for the children, and even food to get them through the first few days was placed lovingly into their suite so that they could rest, start to recover, and simply be together in a peaceful place when they arrived. Handmade quilts and teddy bears welcomed them to their new beds.

As the first few weeks passed, Diya and her children connected with their dedicated Discovery House team which included their case manager, counsellors, and the children's favourite new people – the staff at Rosie's Place, Discovery House's Child Development Centre. Over time, they started to heal. Diya formed deep, trusting relationships with our team, participating in one-on-one counselling sessions and group programs and gaining more strength. She set goals and learned important new skills; how to support her children to heal, how to create a budget, find a new job and a small apartment to rent. As the months passed, she quickly gained back her confidence and felt the glimmers of everyday joy that comes with a life free of violence.

After years of living in fear and isolation, Diya no longer dreaded coming home from the grocery store to an angry partner and she started inviting her friend over for tea. She started to sleep through the night again - without her cellphone under her pillow. The children stopped having nightmares and started making friends and played every afternoon at the playground in the shelter's courtyard. Nine months after the day she left her partner, Diya and her children were able to leave the shelter, move to a cozy home near her new workplace and the children's new school. They are on the path of hope and healing.

*All clients names in this report have been changed to protect them.

2023-24 Board of Directors

Chair: Doris Hall

Vice Chair: Taylor Smith

Secretary: Kristin Anderson

Treasurer: Dale Brown

Past Chair: Simon Scott

Gabriela Gonzalez

Marcie Hawranik

Dr. Dawn Johnston

Carli Tyson

Tom Whalen



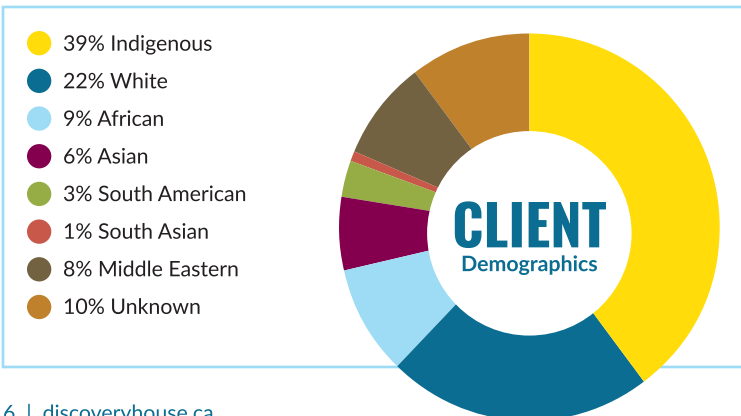
Our Clients

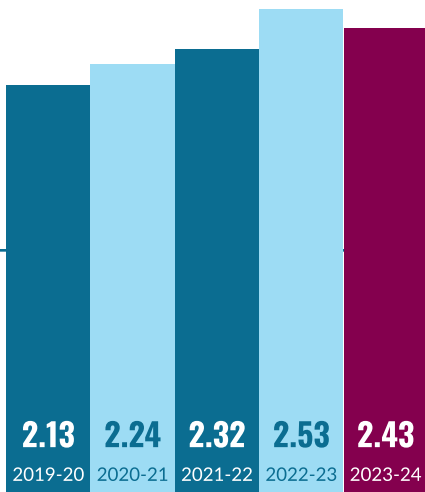
Total number of clients served this year is **503**

Discovery House aims to work with about 600 people every year. This year, we served 149 families with 354 children who experienced the trauma of domestic violence, poverty, and homelessness. Together, our shelter, Community Housing and Outreach programs served a total of 503 people. This 18% decrease from the previous year occurred because families are having an increasingly difficult time finding a home when they are ready to leave. This means they are staying longer in the shelter, and there are fewer openings for new families to access Discovery House.

Families are also coming to Discovery House with more challenges and needs than ever before, meaning they need more time to heal, programs, and support. Often, families are dealing with many forms of violence, including physical, emotional, psychological, and financial, while living with low incomes, physical and mental health challenges and substance use issues. It is incredibly important that we work with each family to create stability and safety, often through extended stays, so that they can address the many concerns they come to us with.

This year, we continue to see higher numbers of Indigenous families and families from other racialized minorities, a trend that has occurred for many years. As a result, we have increased our investment in our ongoing reconciliation work, offering full time cultural connection and healing for clients and staff.





Average Number of CHILDREN PER FAMILY

The families we work with at Discovery House have been growing.

The five-year average of children per family is 2.33 and this year the average number of children per family was 2.43.

Types of Abuse at Intake

49%

Emotional/Psychological/Verbal

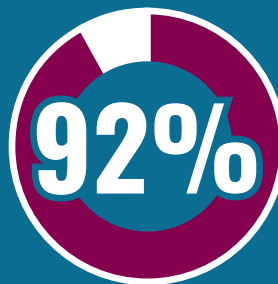
44%

Physical

28%

Financial

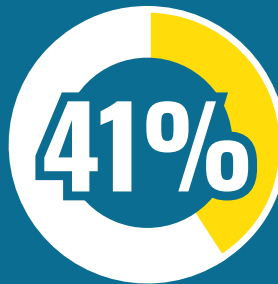
Mothers who entered Discovery House programs this year FACED A VARIETY OF CHALLENGES



Mothers were earning below Alberta's low income cut off. The average family earned just \$24,545.40 per year.



Mothers faced cognitive or mental health challenges.



Mothers experienced physical health concerns.



Mothers were also dealing with substance use issues.

Discovery House is focused on providing safety and care. Leaving an abusive relationship is a very dangerous time. When accessing our services, women complete a Danger Assessment, a validated tool that assesses the woman's risk of being killed by a **person who has used violence** in their relationship. This process helps women identify the risks they face and supports the development of a plan to stay safe, such as building support networks.

Using this tool, 100% of the women accessing our shelter who completed a Danger Assessment identified that they were at risk of being killed by an abusive partner. In our Community Housing Program, 75% of women who completed a danger assessment were at risk.

PERSON WHO HAS USED VIOLENCE: a person who uses violence and abuse to manipulate, control, frighten or hurt others. A person who uses violence can choose to change their behaviour and stop using violence in their relationship.



Our Programs



Thanks so much for your support. I think I would still be stuck if I didn't have the support you provided, you guys were a huge support for my daughter too.

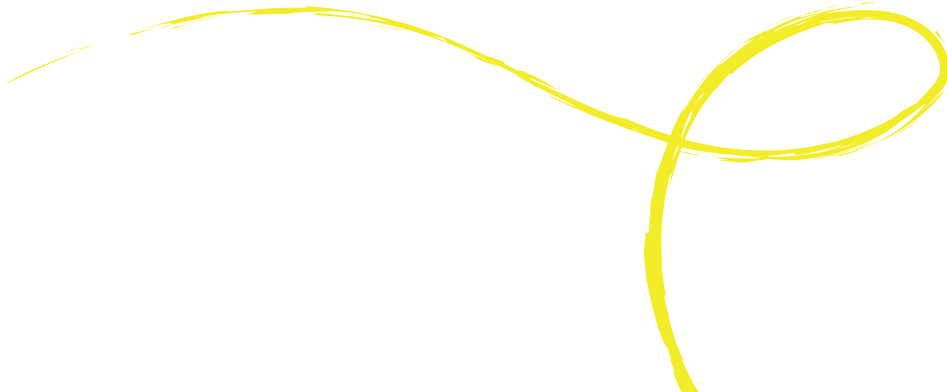
Mari*, mother of three children speaking about her four-year-old Rayna*



We feel so welcomed and supported here, and I didn't think it would be this way.

Wendy*, after attending the Discovery House holiday party with her children

This year, **177 children and 69 adults** left our shelter and housing services having developed skills, begun to heal, and built their resilience to increase their safety and thrive.



Shelter & Outreach

Discovery House's **transition shelter** provides important long-term support for families who need the time to heal and rebuild their lives in a safe, nurturing, and supportive space. The shelter becomes a home for families, and they receive another year of support through our Outreach Program when they leave.

This year, 31 families including 85 children lived at our 19-unit shelter, for a total of 116 individuals. Fourteen families left the shelter, having met their goals and increased their safety, allowing for fourteen new families to enter the shelter. Our outreach program served 23 families including 64 children for a total of 87 individuals.

	Number of Families Accessing the Shelter	Intakes	Exits	Average Length of Stay (months)
2023-24	31	14	14	11
2022-23	35	18	18	11
2021-22	34	16	17	10
2020-21	51	27	25	7
2019-20	43	33	35	6



In 2023-24, families accessing our second-stage shelter and outreach programs received

781

hours of one-to-one support in addition to counselling services.

TRANSITION SHELTER: housing that is intended to offer a supportive living environment for its occupants in need for time and support to heal from their trauma, offering them the experience, tools, knowledge and opportunities for living independently as they move on to permanent housing. Also referred to as second-stage shelter.



In the past year, our Shelter Intake Coordinator received a total of

1,430 calls.

Over the course of the year, the Discovery House team noted some decreased participation in programs from families in our Shelter Program. This was because of the increase in challenges and level of crisis that families were facing when entering the shelter, as well as increased length of stay. To address this, the team developed creative opportunities for families to connect with each other and with staff. As a result, families have attended casual gatherings that include food, crafts, activities and fun, which often coincide with school days off, creating opportunities to build trust and relationships, and re-engage the families in programs.

To streamline access and better support families and individuals needing second stage shelter, we partner with both Brenda Strafford's Heart Home Network and Radiance Family Society to offer shared intake. This allows families and individuals leaving domestic violence to go through a singular application process, rather than filling out multiple applications. This process fosters a spirit of collaboration to provide the best possible care for those who need it and reduces barriers to those accessing our services.



I don't know where I would be without these people. I'm not even sure I would be here. They have never given up on me and are always in my corner.

Haniya*, mother of three children



Community Housing Program

In 2023-24, families accessing our Community Housing Program received **4,016** hours of care in addition to counselling services.



95

families



205

children



94%

satisfaction rate



Our Community Housing Program supports families by finding safe, affordable, and appropriate housing throughout Calgary. They receive an array of services to help them reach their goals, including assistance with budgeting, connections to community resources, liaising with landlords, and one-on-one meetings. The average stay in the Community Housing Program is at an all-time high this year, surpassing the five-year average of 21 months. Unfortunately, with families being supported for longer, we are not able to help as many families each year.

	Families Served	Intakes	Exits	Average Length of Stay (months)
2023-24	95	25	35	24
2022-23	105	41	36	23
2021-22	100	25	36	21
2020-21	106	31	31	20
2019-20	123	48	49	18.5



I wouldn't have found housing and gone back to school without Discovery House's support. Now I can budget on my own, I'm getting straight A's, and I have help for my son who has a lot of challenges.

Karrie*, mother of two

Child and Youth Program

At Discovery House, the Child and Youth Program is focused on working with the parent and the child to reduce the negative impact of trauma on the brain, strengthen parenting skills and promote healthy attachment, helping end the cycle of violence. Every staff member takes training on childhood brain development, and children and youth have access to one-on-one support and case management, with younger children receiving specialized support through our Child Development Centre.

We were excited to re-imagine our Child Development Centre which serves young children who have experienced trauma and reopen it as Rosie's Place in the Summer of 2023. This fresh new space incorporates natural-looking flooring, softer lighting, new technology and equipment in the sensory room, and modular furniture to allow for flexibility in the space. Design elements taken from nature create a calming space that's ideal for building social and emotional skills, while engaging the minds of curious young children and offering outlets for physical development as well. This year, 48 youngsters visited Rosie's Place for over 399 sessions, and we are looking forward to offering even more availability for children in the next year. We are grateful to the dedicated donors who helped transform this healing space for families.

High-quality programming through the summer months helps keep children focused on and actively engaged in their physical and psychosocial development, healing and recovery. Over the summer, 31 children and youth participated in our special Summer Camp which includes field trips to the Calgary Zoo, TELUS Spark, gardening and more.

Group programming helps families feel less alone in their struggle to recover and to learn healthy coping strategies from group leaders and others in the program. Families also benefitted from the Parenting After Violence Program, the Nurturing Parenting Program, the Moms' Empowerment and Kids' Club Programs, and other special events such as holiday parties and lunches.



4,287

hours of care
provided to children
and youth.



After working
with the Child
and Youth team,

100%

of parents report
sharing an
affectionate, warm
relationship with
their child



After working with Discovery House, I have different ways of looking at my son's challenges and I have more tools to be a better parent.

Sammy*, mother to one





Counselling Program

1,786

hours of counselling and group supports provided.



130

individuals accessed counselling.

48%

of them were children and youth.



Every child, youth and caregiver who engages with our housing and shelter support is offered access to a team of highly skilled professional therapists. The therapy team offers counselling designed to help the client understand the impact of violence, increase self-esteem, improve their relationship and communication skills, and address their trauma.

This year, our counselling staff piloted table-top role-playing games in a group therapy setting. Similar to Dungeons and Dragons, participants go on quests while developing their character. A game master – or in this case, a trauma therapist from Discovery House – leads by describing scenarios, guides the group and applies the rules. This is beneficial for young people who have a history of victimization or abuse, as they can work through some of their experiences, develop social skills, conflict resolution skills, and increase their self-confidence.



I eventually stopped seeing my counsellor and I was sad because she helped me believe in myself and make friends. She said she was so proud of me for being able to say that to her and that I grew a lot!

Caleb*, 12-year-old boy

OF THE MOTHERS WHO ACCESSED COUNSELLING PROGRAMS:

92%

improved or maintained their sense of well being

83%

improved or maintained their interpersonal relationships

Financial Literacy and Empowerment Programs

Because the issue of poverty is **intersectional**, and because most of our clients are living on low incomes, Discovery House works with Aspire Calgary, a multi-sector collective working to reduce poverty.

100%

of mothers were offered budgeting assistance

INTERSECTIONAL: the study of overlapping or intersecting social identities and how these result in unique combinations of discrimination and privilege.

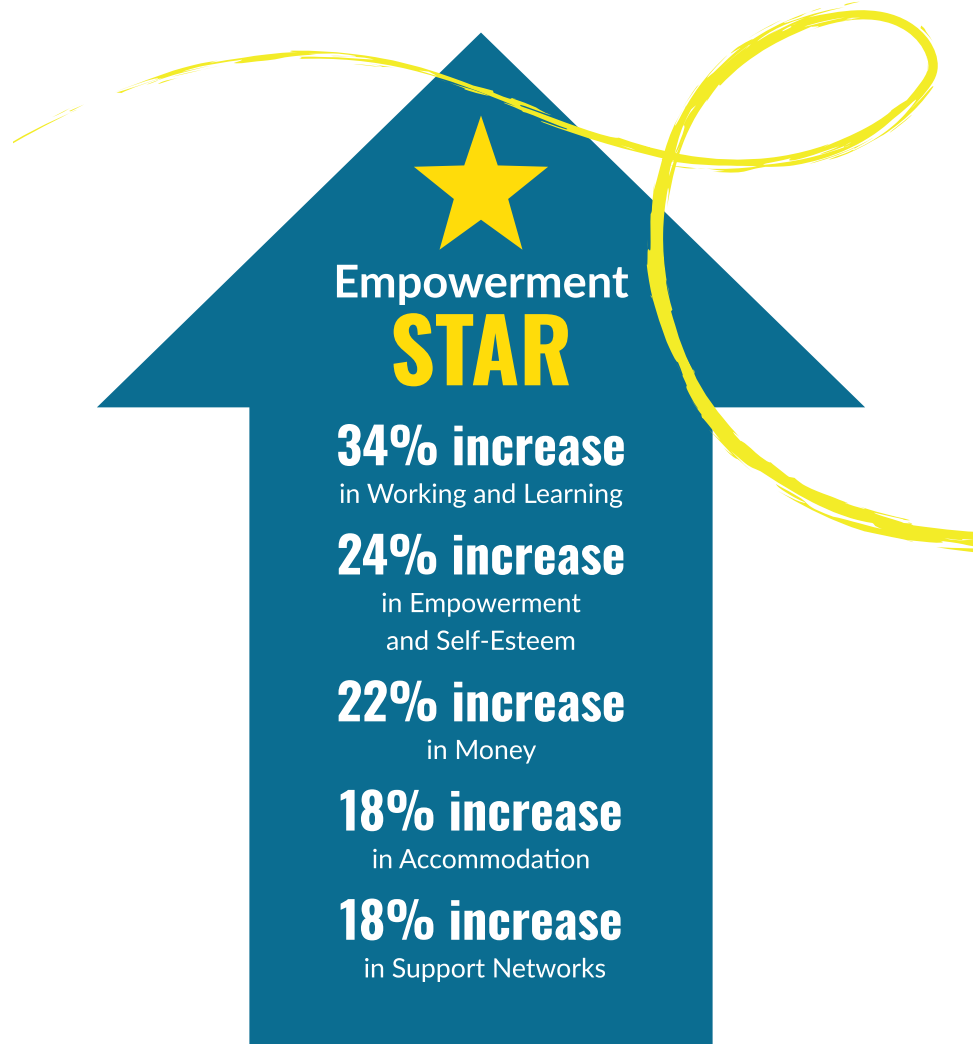
Data and Evaluation

Discovery House is committed to ensuring that every dollar invested in our work is spent as wisely as possible. That's why we've prioritized improving our data and evaluations practices to ensure that we are operating efficiently, allocating resources wisely, and optimizing the impact for our clients.

In the past year, we worked with consultants to review our Data and Evaluation Framework to increase our ability to collect, analyse, and make decisions based on sound data that ensures our organization is equipped to address the specific challenges faced by families. It will also enhance our ability to share quality information with sector partners and funders. As the project moves forward, we anticipate valuable insights for future projects, continuous learning and improvement.

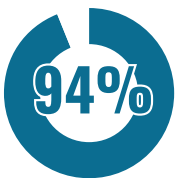
The Data & Evaluation project was funded by the Government of Canada under the Community Services Recovery Fund, and by the City of Calgary Capacity Building & Emerging Issues Fund and the Burns Memorial Fund. Le projet de données et d'évaluation est financé par le gouvernement du Canada sous le Fonds de relance des services communautaires.

We are pleased to now have two full years of Empowerment Star data to help guide our programming. Using this tool, adult clients rate their current experience in nine areas: Safety, Accommodation, Support Networks, Legal Issues, Health and Wellbeing, Money, Working and Learning, Children, and Empowerment and Self-Esteem on a scale of 1-10. This year we saw some amazing changes happening with clients, which is reflected in our Empowerment Star data.



Client Satisfaction

An important measure of success is client satisfaction. In 2023-24, of clients who completed a survey:



reported overall satisfaction with the program



agreed or strongly agreed that they were in safe and appropriate housing



said they were happy with the support services they received



Discovery House has really been there for me; they don't judge me or my family. Discovery House has been so helpful and has done so much for me.

Erin*, mother of three children

Cultural Programming



On June 21, 2023, Indigenous Peoples Day, we formally opened a space for healing and cultural connection. A ceremony was led by Elders Martin and Pam Heavy Head. They gave us two names for this special room: Kookonnooni in Blackfoot, and Kiikinow in Cree. These names mean “Our House” and are reflective of the diversity of our clients and the spirit of belonging and safety we strive for everyday.

The room is available for families and staff to smudge, pray, meditate, meet with Elders or other supportive individuals. Families have been using the room on a regular basis, and when the sweet, earthy smell of smudge wafts throughout we are all reminded of the healing benefits of ceremony, harmony, and ritual.

Thank you to the Titchkosky Family Foundation for making this dream a reality.

Based on client feedback and guided by Elder Pam Heavy Head and the Indigenous Committee, we created a Cultural Liaison position. The Cultural Liaison helps build community and create safe, healing spaces for the women and children who are served by Discovery House. She acts as a bridge between clients and Indigenous and culturally specific supports, hosting traditional activities and teachings for families and connecting them to Indigenous-serving organizations, **Jordan's Principle**, newcomer services and more. The Cultural Liaison helps build our staff's knowledge and cultural competence by compiling and sharing events and resources, facilitating workshops and traditional activities, and coordinating healing circles and training sessions. We successfully created joyful, inclusive activities that promote cross-cultural understanding and appreciation, building community among the staff and between the families we support.

With the support of the Cultural Liaison and Elder Pam, Discovery House launched the first ever Indigenous adaptation of Moms' Empowerment and Kids' Club in February 2024. This launch was a significant undertaking, requiring intense collaboration between the team at Discovery House and researchers from the Universities of Manitoba and Calgary, along with the creator Sandra Graham-Bermann, PhD. from the University of Michigan.

Kids' Club is a group session that enhances a sense of safety for children aged 6-12 and helps them understand their emotions. Moms' Empowerment is a complementary, simultaneous group session for caregivers. The goal of the adaptation is to empower Indigenous mothers with traditional teachings and ceremony, while equipping them with the resources, skills and connection to culture necessary to support their children effectively. This initiative recognizes the pivotal role mothers play in the overall well-being of children and seeks to create a ripple effect of positive change within families.

“

The cultural support at Discovery House is welcoming and comfortable. The team helped me explore my culture in a safe place, at my own pace. I want to continue to learn more and explore my culture. Thank you for everything.

Brooke*, an Indigenous mother of four children

JORDAN'S PRINCIPLE: a child-first principle that applies equally to all First Nations children. It was adopted in Canada in 2007 with the intent to avoid children from being denied essential public services or experiencing delays in receiving them.



Mothers accessed a total of

6

cultural events and activities for a total of

60

hours





Our Team



All program staff participated in at least one Equity, Diversity and Inclusion training, for a total of

105

training hours.

Staff accessed

11

Indigenous events and

6

other cultural events

Our devoted, experienced staff are critical to the work we do with families. That's why Discovery House offers training and learning opportunities for staff to grow and deepen their expertise.

We recognize that our staff are facing increased need and crisis from clients, so to help keep them well we increased mental health and counselling benefits. This way, our staff can access the support they need, when they need it.



Our team is diverse and speaks a total of

10

languages

Our Volunteers

There were so many ways that our community came together to help build thriving families. In the past year, volunteers contributed 1,837 hours, an estimated value of \$49,599 of work. Our devoted volunteers helped in a variety of ways, including setting up suites, thanking donors, cutting hair, building furniture, getting donated items to clients, and more!

In April 2023, we celebrated our volunteers and their tremendous work and were glad to connect with new and experienced volunteers.

1,837 volunteer hours = \$49,000+



Facilities and Operations

In addition to 19 apartments, Kookonooni Cultural Room and Rosie's Place Child Development Centre, our 20-year-old building is home to a community kitchen, gathering space, counselling rooms, and offices for our staff serving families both in the shelter and living in the community.

To ensure longevity, and to ensure our ability to serve clients well into the future, we assess and maintain the building regularly. In this fiscal year, we replaced failing windows and siding to increase both safety and energy efficiency, and upgraded outdated fire, emergency, alarm, technology and communications systems in the building.

A person's physical environment affects their ability to heal from trauma. So, as spaces come in need of repair, we apply **trauma-informed design** principles to create spaces that intentionally promote safety, dignity, well-being, and healing. With each project, Discovery House's shelter becomes even more welcoming, and helps families impacted by domestic violence to heal.

In the year ahead, we look forward to unveiling an accessibility renovation to a three-bedroom unit in our building, and the completion of an accessibility renovation to a staff washroom. This project is funded in part by the Government of Canada's Enabling Accessibility Fund.

This project received financing from Canada Mortgage and Housing Corporation (CMHC); however, the views expressed are the personal views of the author and CMHC accepts no responsibility for them / Ce projet est financé en partie par la Société canadienne d'hypothèques et de logement (SCHL), cependant, les opinions exprimées sont les opinions personnelles de l'auteur et la SCHL n'accepte aucune responsabilité pour ces opinions.

We are also grateful to the Government of Alberta's Community Facility Enhancement Program, Alberta Social and Housing Corporation, an anonymous donor through Calgary Foundation, P.E.A.R.L. Foundation, CREB® REALTOR® Community Foundation, the Poelzer Family Foundation Fund at Calgary Foundation and The Calgary Foundation for their support on these projects.

Canada

Alberta
Government

CALGARY
FOUNDATION
FOR COMMUNITY, FOREVER

creb®

TRAUMA-INFORMED DESIGN

the deliberate planning and implementation of a space that recognizes that the physical environment affects identity, dignity, and promotes empowerment, well-being and safety.

Our Community



Discovery House is like sowing seeds, never knowing which ones will take root and produce strength for clients in days and years to come. I have been sustained for 26 years by what I learned from my experience with at Discovery House and I continue to be grateful to the individuals who protected me and shared their wisdom. **A former client, now a donor**

Congratulations to Barbara Palmer, who won the Doc Seaman Individual Philanthropist Award through the Generosity of Spirit Awards. We were delighted to nominate her along with our friends at Alberta Ballet, and to celebrate her with her daughters on National Philanthropy Day.



It is so important that Discovery House exists, our small contributions do not even begin to represent our gratitude for what the team does for the Calgary community. **Doug Laird, donor**



Last June, we were proud to honour some of our treasured, devoted supporters who have been giving to Discovery House for 10 years or more with a small token of our appreciation: a plant that symbolizes gratitude. **Thank you all for “growing hope!”**



We are so happy to have been able to donate this to Discovery House and we are even more grateful for the good work you guys are doing! **Buttercream Clothing**

Our She is... event celebrated International Women's Day on March 8. Hundreds of passionate gender advocates, who enjoyed a delicious breakfast and insights from Calgary's own Manjit Minhas. Thanks to Grant Thornton LLP, our Presenting Sponsor, and to CTV Calgary, Tourmaline Oil, Acera Insurance, CMR Consulting, MMG Mortgages, Propel Mortgage, Jayman Homes, the City of Calgary and all the volunteers who made the event a success.



Our generous community of supporters came together to raise more than \$10,000 in November for #GivingTuesday to help families who are building a life free of domestic violence.



I wish there had been a place like this for my mother when I was growing up. **Irene, donor**

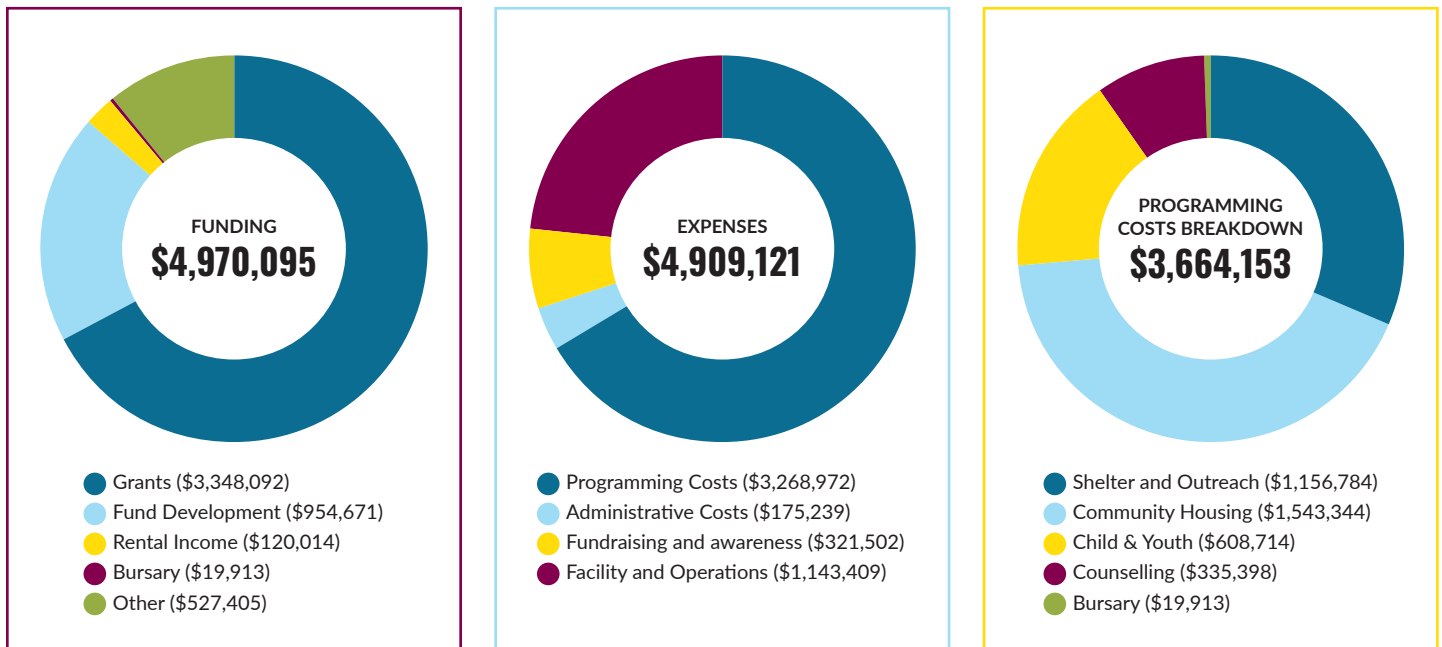
In December, the Gift of Hope campaign surpassed our target, ensuring that we received the full matching gift of \$100,000 from The Auxilium Foundation.

To each person who has played a part in ensuring that Discovery House can continue to be a place of safety, joy, healing and growth for Calgary's families this year: Thank you! We hope you are proud to know that the impact detailed above is a testament to your dedication, generosity and care.

Thank you also to so many community members who raised funds for Discovery House in the past year: 60 North Run, Agriculture Union National Human Rights Committee, Amplified Athletics - Warrior Workout, Big Al's Bar and Grill, The Big Canada Run 2023, Brookline Public Relations Inc. - Fashion & Fun, Buttercream Clothing, Calgary Shaw Charity Classic Foundation, COBS Bread Bakery Country Hills - DoughRaiser, Cottonwood Ladies Club, Hardline Engineering and Firefly Power & Energy, High Heels and High Tea YYC, Lil' Empire Burgers - Charity Chow, Madame Premier, Rosen Canada, SophieGrace, Melanie Emlyn, Reba Hopf and Bre Sich.

The Financial Picture

Despite continually rising costs, the pressure of inflation, and increased insurance and utility costs, we had a strong financial year, putting the organization in a good position for 2024-25. We're grateful for the funding that enabled investment in some strategic areas, including the Cultural Liaison role and repairs on our building, which will extend its useful lifecycle and create spaces that are healing and dignified for our clients.



Our Core Funders

We are incredibly grateful for the ongoing support of our core funders: from the Government of Alberta, the Calgary Homeless Foundation, and Family and Community Support Services – City of Calgary.



For the fifth year running, Charity Intelligence named Discovery House as one of the Top 100 charities in Canada in 2023, with a 5-star rating and an A+ grade in results reporting. We are grateful for this recognition and hope that our supporters feel proud that their investments have been used effectively and efficiently to help families find hope and healing.

“

Thanks again
for your entire
organization's
work! You are a
force for good
in the world!

Wyatt, monthly donor



Join our community of monthly donors who are committed to ending the cycle of family violence. When you join the Circle of Hope, you help families heal and thrive – all year long. To sign up, visit <https://discoveryhouse.ca/donate/> or email donate@discoveryhouse.ca

Thank you for your crucial support.



Discovery House

PO BOX 85058, Albert Park PO
Calgary AB, T2A 7R7
403-670-0467
discoveryhouse.ca

 @discovery_house

Charitable Registration # 11882 3483 RR0001

In the spirit of reconciliation, we acknowledge that we live, work, and play on the traditional territories of the Blackfoot Confederacy (Siksika, Kainai, Piikani), the Tsuut'ina, the Îyârhe Nakoda Nations (Bearsaw, Chiniki, Goodstoney), the Métis Nation of Alberta, District 5 & 6, and all people who make their homes in the Treaty 7 region of Southern Alberta.