

# EQUIPPING FAMILIES ACROSS THE LIFESPAN

Children's Link Society recognizes that, across the lifespan, families are the most important and consistent source of support and advocacy for their loved ones with disabilities.

We serve over 3700 families per year - of all ages, stages and diagnoses!

We empower families to connect with the services and supports they need - when they need it!

## COMMON TOUCHPOINTS FOR FAMILIES

early childhood



### DIAGNOSIS

Adjusting to receiving a diagnosis and taking the next steps



### SUPPORTS

Accessing and applying for government supports (FSCD - Family Supports for Children with Disabilities)



### DEVELOPMENT

Addressing developmental concerns



### EDUCATION

Shifting from early childhood services to the school system



### THERAPIES

Requesting and coordinating specialized therapists (ex. OT, PT, Speech, etc.)



### PRESCHOOL

Selecting a preschool or early intervention program

childhood



### BEHAVIOUR

Managing behavioral concerns and learning strategies to address challenging behaviors



### SCHOOL SYSTEM

Navigating issues with teachers, educational supports and the school system



### SOCIAL SKILLS

Encouraging the development of social connections and social skills



### RESPIRE

Obtaining respite services and support workers to keep the family healthy



### SUPPLIES

Locating needed supplies and equipment to address special needs (ex. sensory materials, diapers etc.)



### RECREATION

Finding suitable opportunities for leisure, recreation and community involvement

adolescence/adulthood



### PUBERTY

Coping with changes that come with puberty, exploring sexuality and social acceptance



### ADULTHOOD

Preparing to transition from children's services to adult services. Planning a meaningful life and building a circle of supports



### PROGRAMS

Researching options for adult day programs, post-secondary educational programs and volunteer or work opportunities



### FUTURE PLANNING

Handling will and estate planning and arranging to protect a vulnerable adult child, when parents/guardians are no longer able to provide care

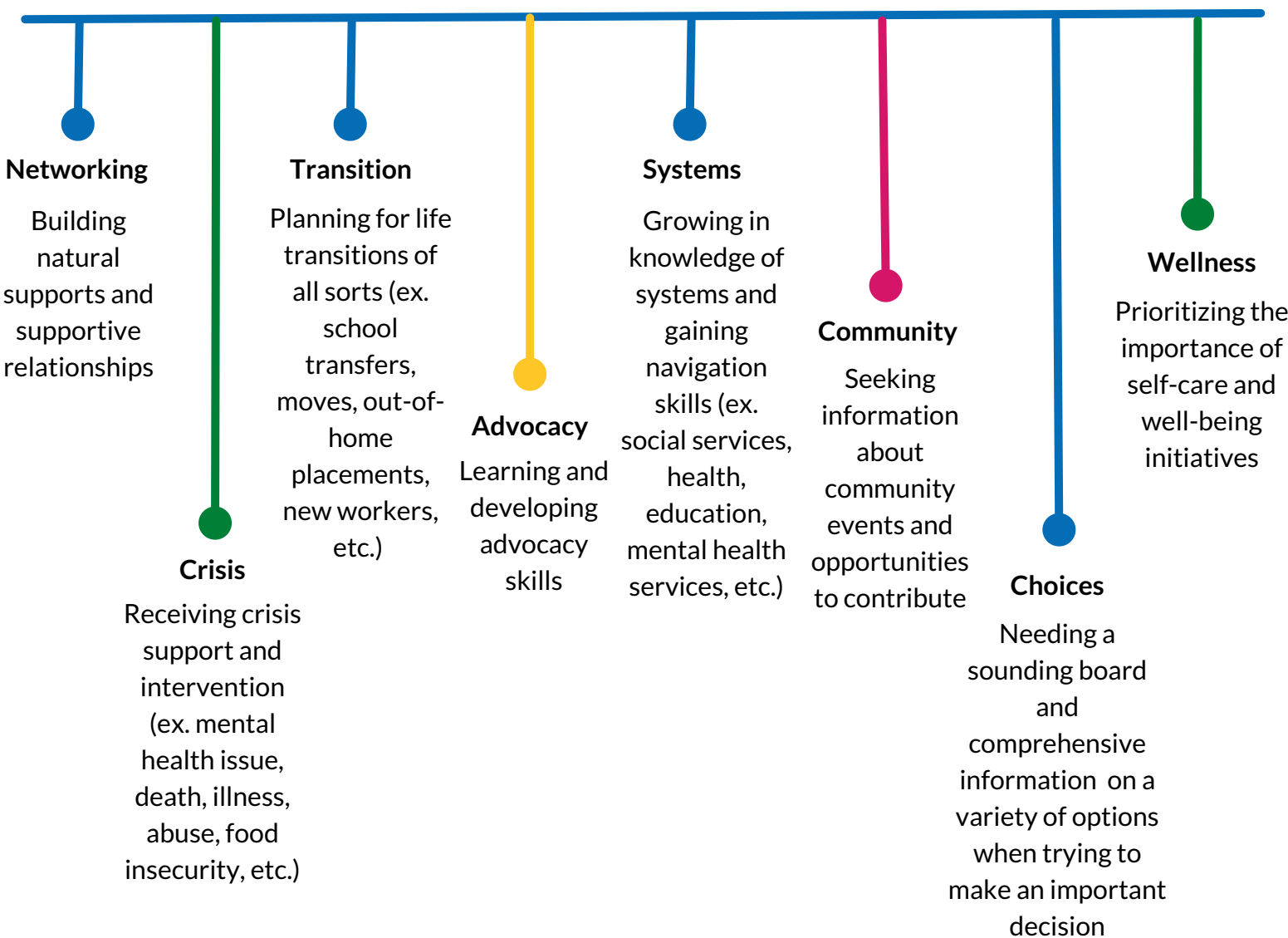
### LIVING ARRANGEMENTS

Investigating options for living arrangements and possible transitioning to an out-of-home living situation

### APPLICATIONS

Completing and filing court applications for Guardianship and Trusteeship. Completing applications for adult supports: AISH (Assured Income for the Severely Handicapped) and PDD (Persons with Developmental Disabilities)

## ALL AGES & STAGES



Children's Link assists families to access information and service options, at no cost, based on individual need. We have an extensive database of over 1000 community resources to help support families on their journey.

Support is provided through one-on-one conversations, natural support groups, workshops, resource fairs, and online. Children's Link offers a safe, accepting environment for people to learn, share, connect and grow.

**Over 94%**

of families felt more informed , connected, and empowered after accessing our services